

MC 55L = 45 /A

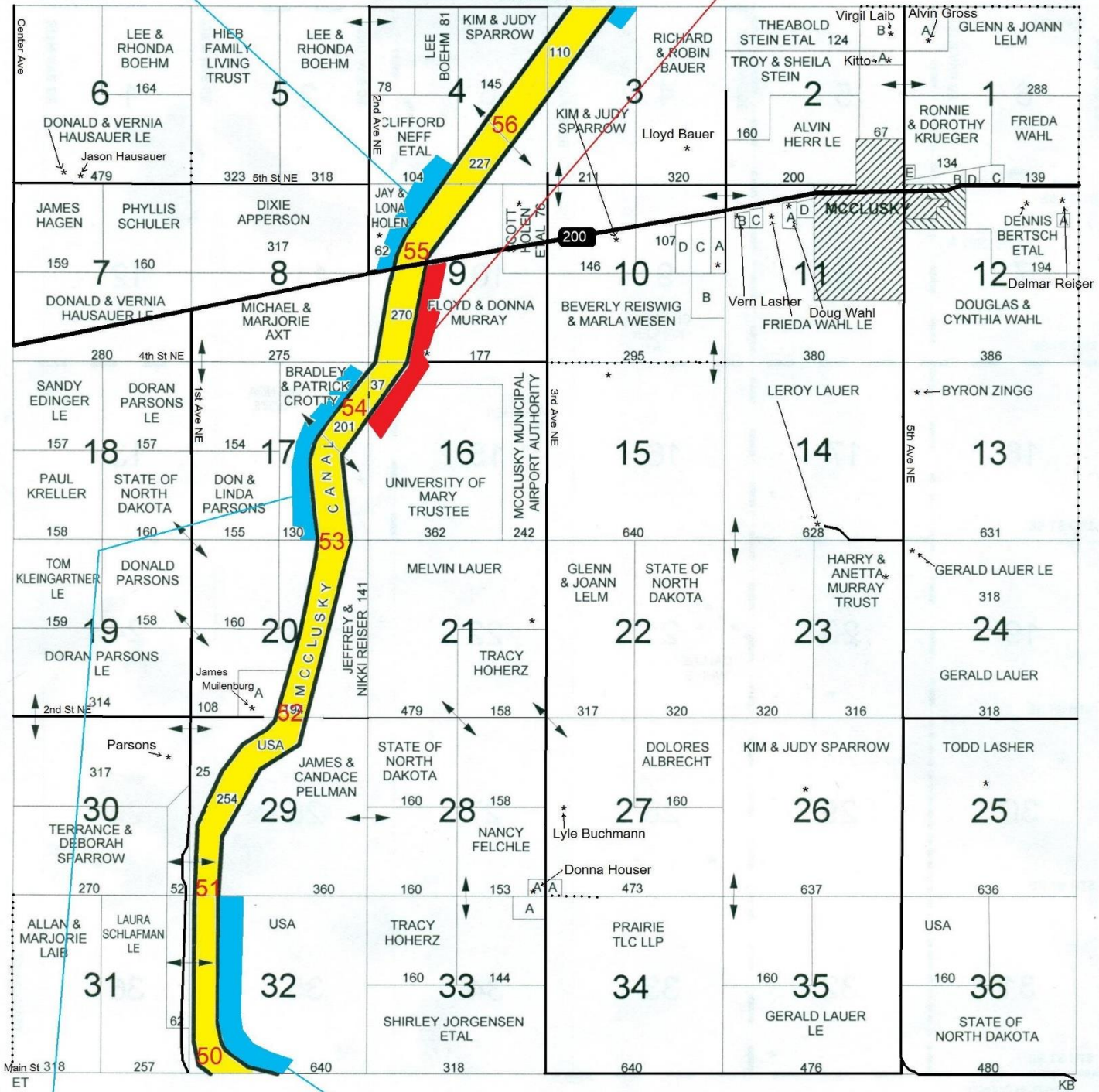
MCCLUSKY PLAT

MC 54R = 64.6 /A

T-146-N

CODE: AR

R-77-W



MC 53L = 70 /A

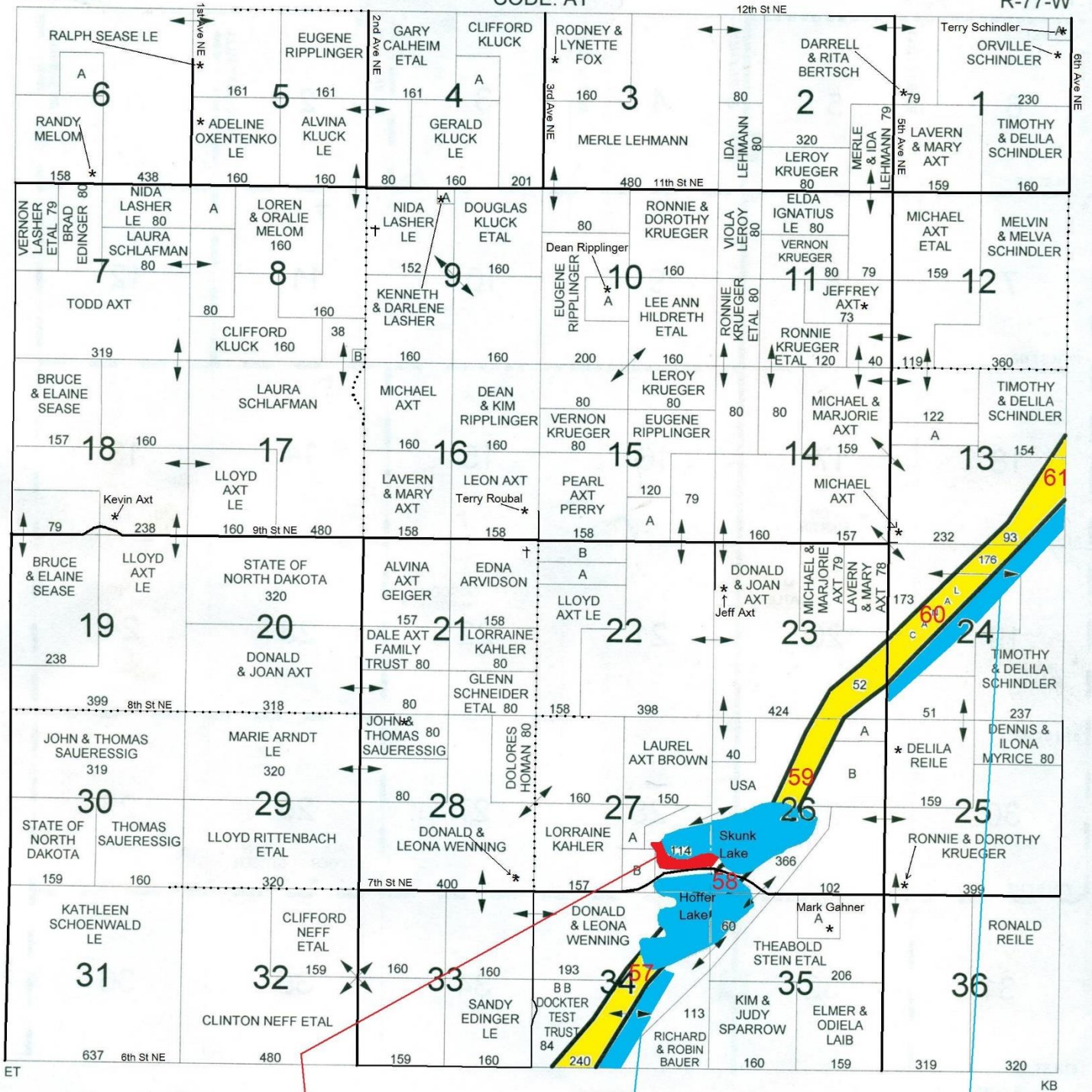
MC 50R = 62 /A

MOUNTAIN CITY PLAT

T-147-N

CODE: AT

R-77-W



MC 57R = 33.5 /A

MC 58b L = 81.5 /A

MC 60R = 71.5 /A