

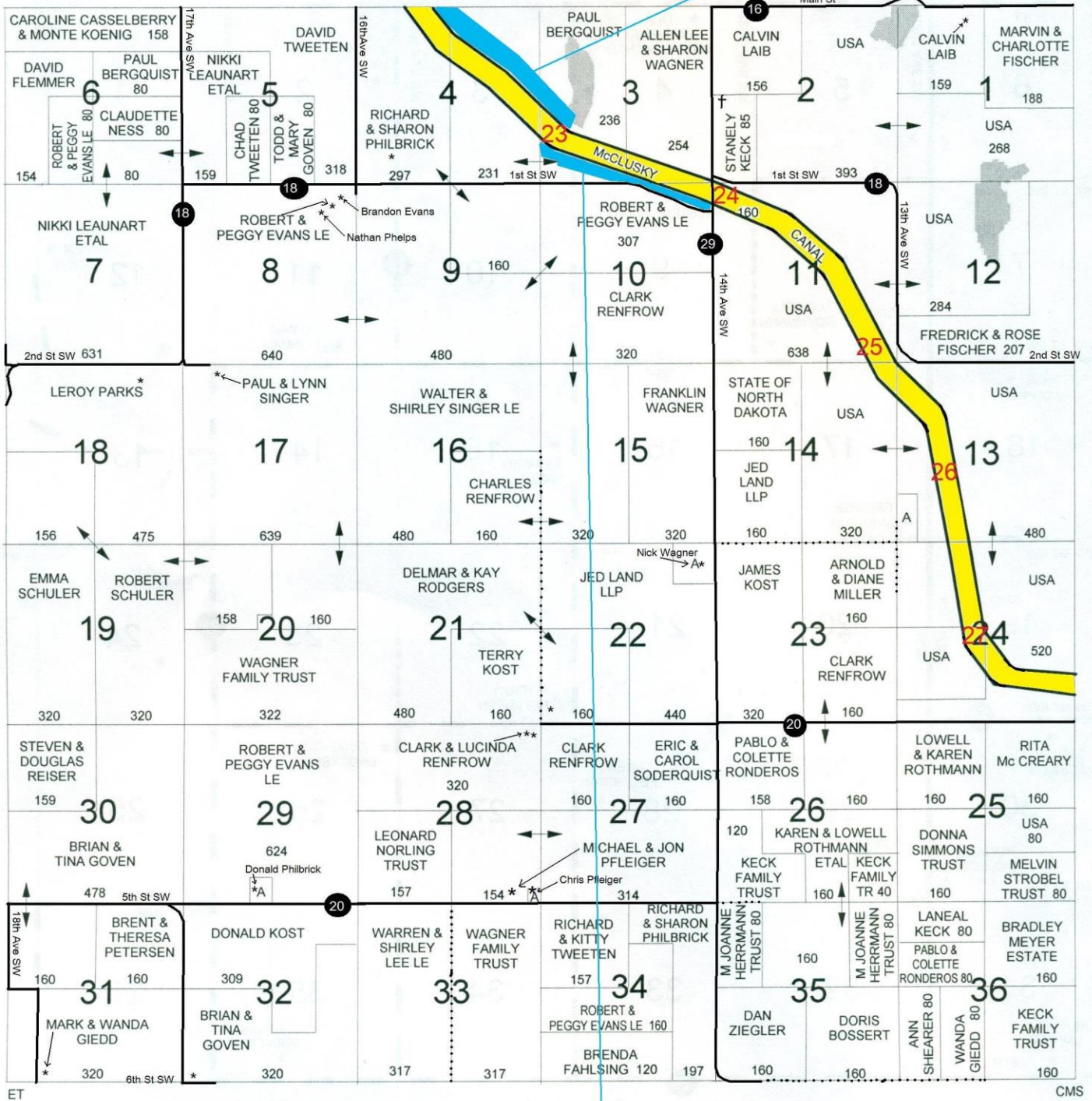
# TWP 145N - R80W PLAT

MC 22L = 53 /A

T-145-N

CODE: CI

R-80-W



MC 23R = 33 /A

MC 30L = 55 /A

TWP 145N - R79W PLAT

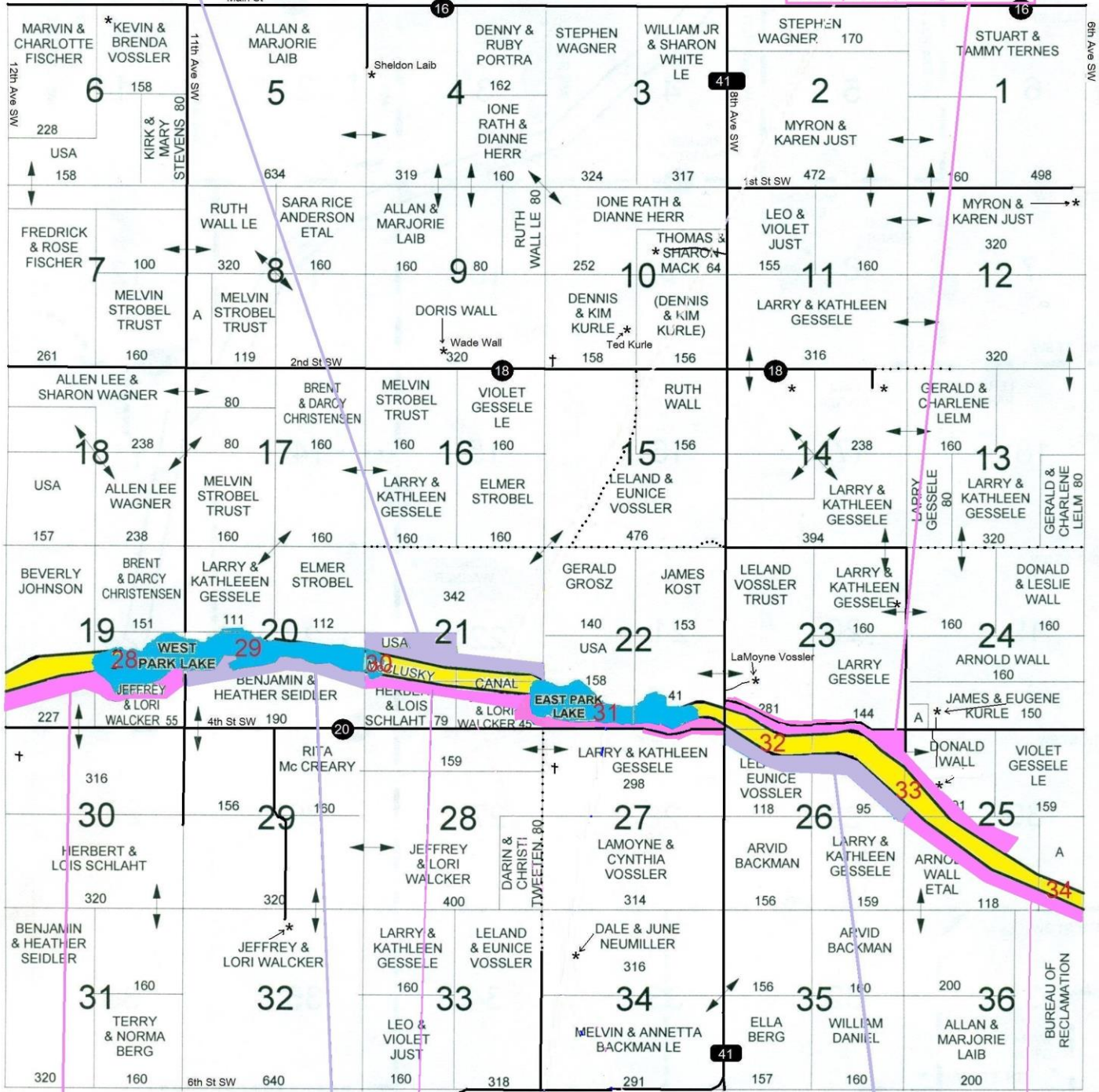
MC 32L = 122 /A

with both ditches by county road (see signs)

T-145-N

CODE: CJ

R-79-W



MC 28R = 30 /A

MC 30R = 65.6 /A  
with both ditches by county road (see signs)

MC 29R = 36 /A

MC 32R = 38 /A

MC 33R = 73 /A